

cero by Solarlux

cero



cero by Solarlux

cero opens rooms with extensive glass panels: impressive transparency dissolves the line between inside and outside. As a brand of Solarlux, the leading supplier in the field of folding glass doors and glass extensions, cero benefits from over 30 years of experience in the field of customised solutions with the guarantee of precision, intelligent technical details along with their own production, construction management and discerning design exclusively "made in Germany".







Great Design Freedom

cero offers every possibility required from architecturally demanding buildings from a constructive and creative point of view light, material, space and nature speak for themselves – borders between interior and exterior melt away.







Perfect Frames

Narrow frames and sections support the maximum transparency of the elements. A mere 34 mm of profile width gives a symmetrical and minimalist design emphasised by 98% glass.







Excellent Security

Extremely large glass panels of up to 15 m² put quality and security aspects in special focus. zero is tested and certified to the highest security standards (RC2 and RC3). A 2-point rod locking system with adjustable locking points and a hub of 24mm in the upper running and guide rails is standard. It is possible to fit connections for alarm installations, or reporting systems such as glass-break sensors or position monitors.







Award-winning Design

Along with well thought-out constructive and technical details, cero also distinguishes itself through its great aspirations concerning its design, a fact confirmed by prestigious design prizes awarded by various international juries:

- **Iconic Award** „Best of Best“ in the category “Façades”
- **iF Gold Award** in the category “Building Technology”
- **German Design Award** in the category “Building and Elements”.





Service That You Can Completely Relay Upon

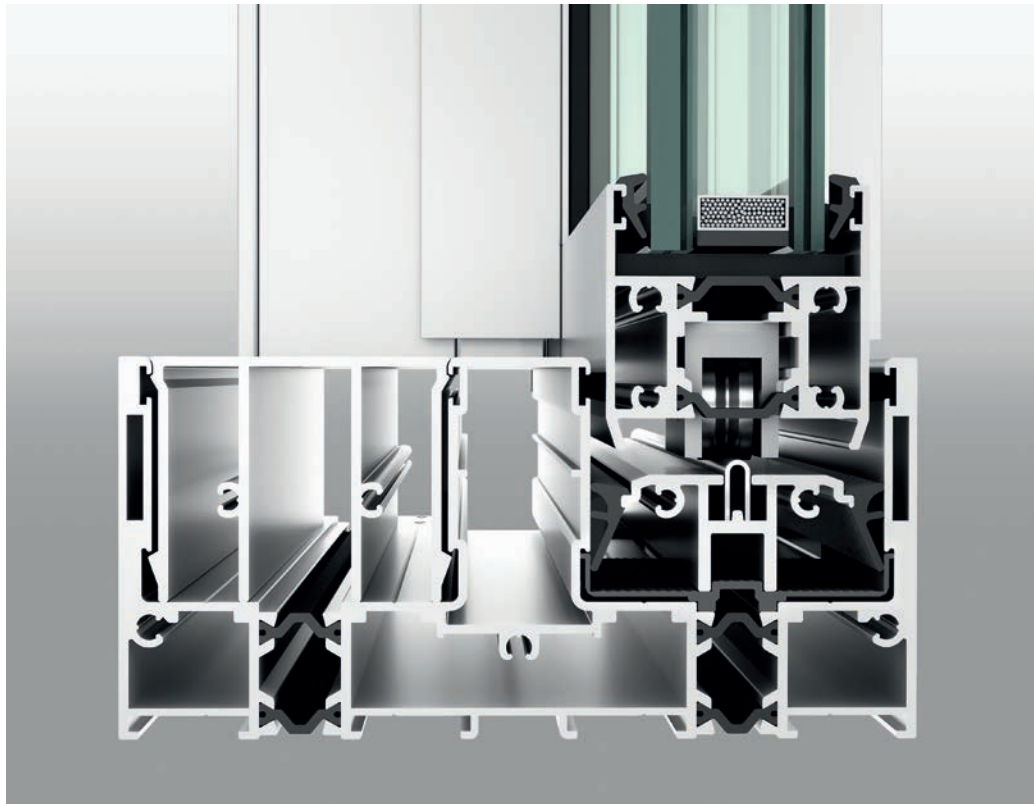
Those opting for zero also opt for the renowned service reliability of Solarlux. Project planning is carried out by a product-oriented architectural adviser. Project management is executed by experts with vast experience in large, international projects. Trouble-free project execution ensured by well-practised logistics by an own vehicle fleet and special cranes and an installation team specialised in the complex installation of large glass panels.





Sophisticated Details

cero stands for quality “Made in Germany”. All of the research and development for these large panels is done in our own Research & Development Center. cero passes all known test requirements with ease.



Easy Gliding

Stainless steel carriages and rails guarantee easy and low-wear sliding, the integrated stainless steel roller units ensure an even load distribution. An electric panel operation can be installed on request. cero successfully passed a longevity performance test of 100,000 opening and closing operations.

Intelligent Drainage

Draining takes place in a hidden and controlled manner at the lowest level of the frame section. The glass rebate ventilation avoids condensation in the space between the panes.

High-end Thermal Insolation

cero offers optimal thermal insulation. Its triple toughened glass version achieves U_w values in the region of $0.8 \text{ W/m}^2\text{K}$, suitable for use in passive houses.

Wind and Weather Protection

cero is tested and certified for air permeability, wind load and driving rain impermeability, thus exceeding the testing demands of protection from wind and weather.

Sophisticated Details



Integrated Security Technology

cero can be optimally integrated into an existing, overarching surveillance system. Electro-mechanical blocking and locking systems are available, additional lock monitoring by Reed contact.

E-Drive

Fully-automatic operation of the sliding elements including electro-mechanical locking and unlocking of the elements are available on request. It is possible to move several panels independently of each other by means of a single control unit.

Accessibility

cero offers flush-mounted floor tracks for barrier freedom in accordance with DIN 18040. Depending on the guidance system, the overall depth of the cero II system is between 71 mm (single track) and 243 mm (triple track).

Customised Accessories

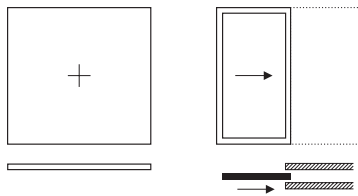
Accessories are also optimally adapted to the demands of a maximum sliding window. Protection against insects up to a height of 3.50 m can be directly integrated into the frame or retro-fitted after installations.

Design Examples

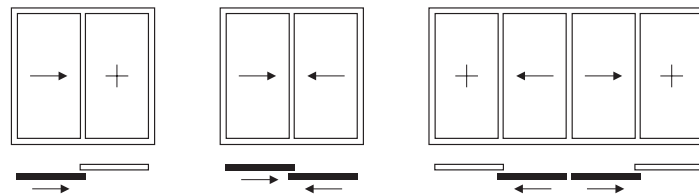
The possibilities of combining the system elements of cero as sliding, fixed and corner elements are mutually limitless. They provide amazing degrees of freedom in design and layout.



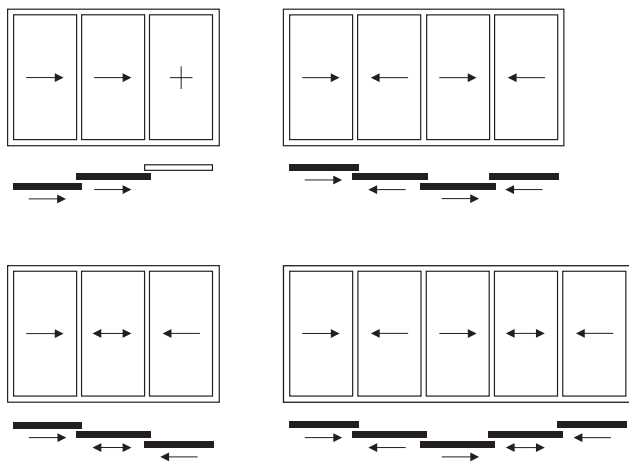
single-track



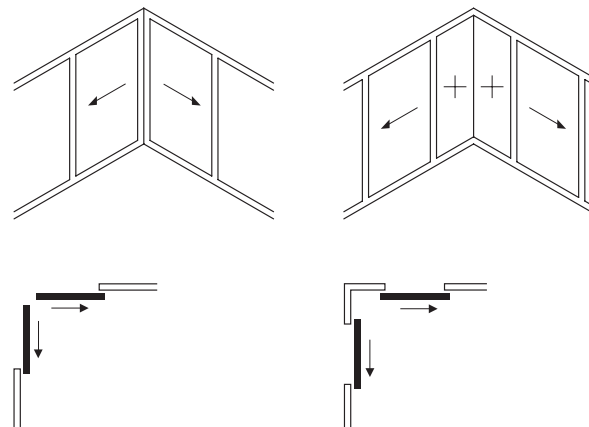
2-track



3-track



Corner solutions







System Overview

You can rely on experienced cero advisors to choose the most suitable variants for your project. The adjacent table compares key system features to provide an easy-to-read overview.

Sliding elements (max. width × max. height)

Fixed glazing (max. width × max. height)

Insulating glass (double)

Daylight/Proportion of glass

Sliding technology

slide rail/Floor section

Weight of panel

Visible width

Frame height

Thermal separation

Thermal insulation value (glass $U_g = 1.1 \text{ W/m}^2\text{K}$)

Thermal insulation value (glass $U_g = 0.5 \text{ W/m}^2\text{K}$)

Heavy rain impermeability up to class

Air permeability up to class

Resistance to wind load up to

Motorisation

Fly protection

cero I

cero II

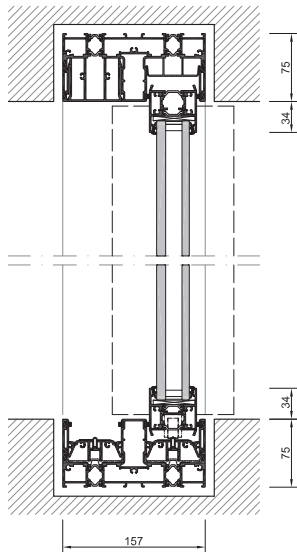
cero III

3 × 4 m / max. panel size 12 m ²	3 × 4 m / max. panel size 12 m ²	4 × 6 m / max. panel size 15 m ²
3 × 4 m / max. panel size 12 m ²	3 × 4 m / max. panel size 12 m ²	4 × 6 m / max. panel size 15 m ²
30–36 mm (ESG)	30–36 mm (ESG)	48–54 mm (ESG) / 50 mm Standard
98 %	98 %	98 %
Carriages and slide rails of stainless steel	Carriages and slide rails of stainless steel	Carriages and slide rails of stainless steel
barrier-free in accordance with DIN 18040	barrier-free in accordance with DIN 18040	barrier-free in accordance with DIN 18040
max. 600 kg	max. 600 kg	max. 1.000 kg
circumferential 34 mm	circumferential 34 mm	circumferential 34 mm
0–75 mm	0–75 mm	0–79 mm
–	in sash and frame	in sash and frame
–	U _w up to 1,35 W/m ² K	–
–	–	U _w up to 0,76 W/m ² K
–	9A (EN 1027 / EN 12 208)	E750 (EN 1027 / EN 12 208)
–	4 (EN 1026 / EN 12 207)	4 (EN 1026 / EN 12 207)
–	B4 (EN 12 210 / EN 12 211)	B3 (EN 12 210 / EN 12 211)
–	Electromechanical drive, automatic operation optional	Electromechanical drive, automatic operation optional
–	up to 3.50 m high	up to 3.50 m high

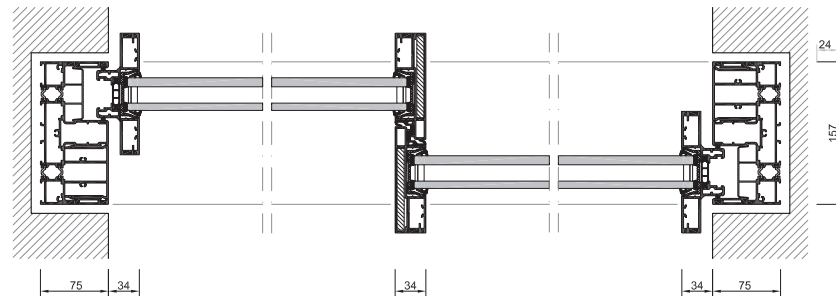
Detail Section cero II

cero II should be used in situations of statically increased demands, i.e. due to wind load. The standard version comes with two sheets of toughened single pane safety glass (ESG).

Vertical section | nts



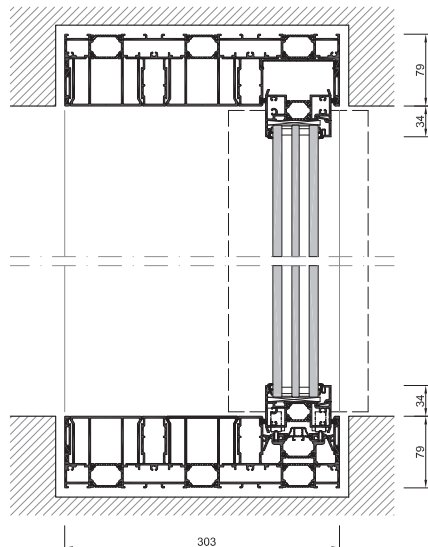
Horizontal section | nts



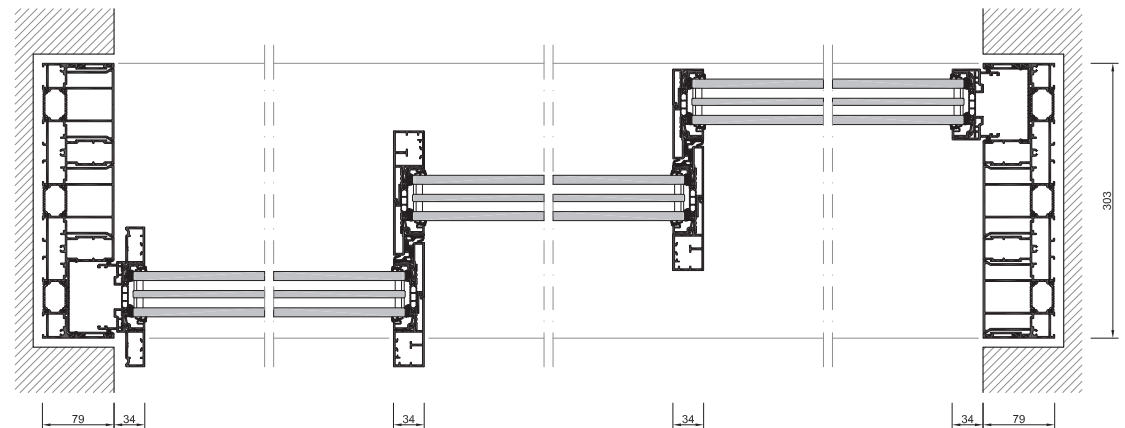
Detail Sections cero III

cero III meets challenging demands to provide the lowest possible U_w - values and is equipped as standard with triple toughened single pane safety glass (ESG). To meet the highest design requirements, a moveable corner solution and an all-glass corner are also possible.

Vertical section | nts



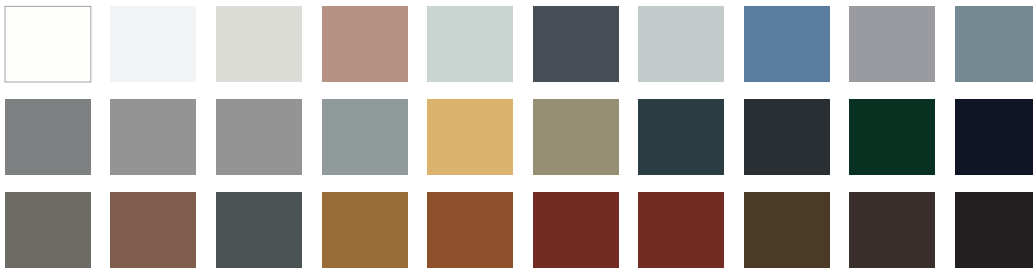
Horizontal section | nts





Design Freedom

Along with vast opening options, cero also offers a wealth of colour variations.



Colour

There is total freedom of choice when it comes to the colour scheme of the cero sections. It is even possible to select different colours for interior and exterior areas. There is a choice of powder coatings pursuant to RAL or DB specifications, EURAS eloxal colours as well as a large selection of special colours on request.

Glass Options

Depending on the option chosen, cero can be delivered as triple or double toughened single pane safety glass (ESG). Panels are available as functional glass with intrusion or impact resistance, or sound-proofing or as glass with lotus effect.



Fittings

As a standard, cero is equipped with a high-end design handle made from brushed V4A stainless steel, guaranteeing maximum corrosion protection.





Solarlux GmbH · Industriepark 1 · 49324 Melle · Fon +49 5422 92710 · info@zero.de · www.zero.systems

zero